

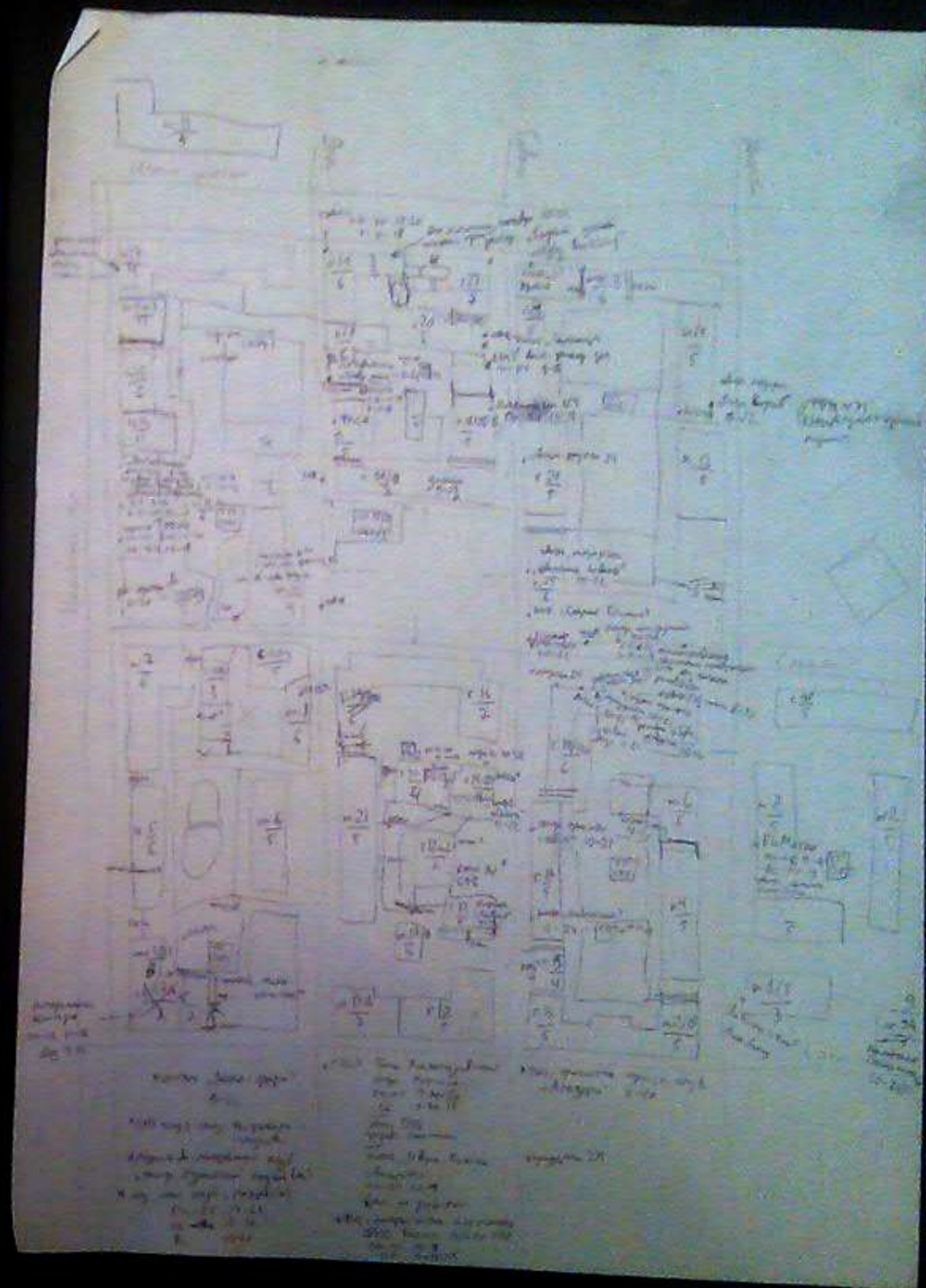
A dark-colored SUV is driving on a dirt road that curves through a rural landscape. The background shows a line of trees under a bright, overcast sky. The text is overlaid in the center of the image.

**I've bought a car for mapping!
Now what?**

Ilya Zverev, SotM EU 2014



Bigfatfrog67
prefers to go outside and map.

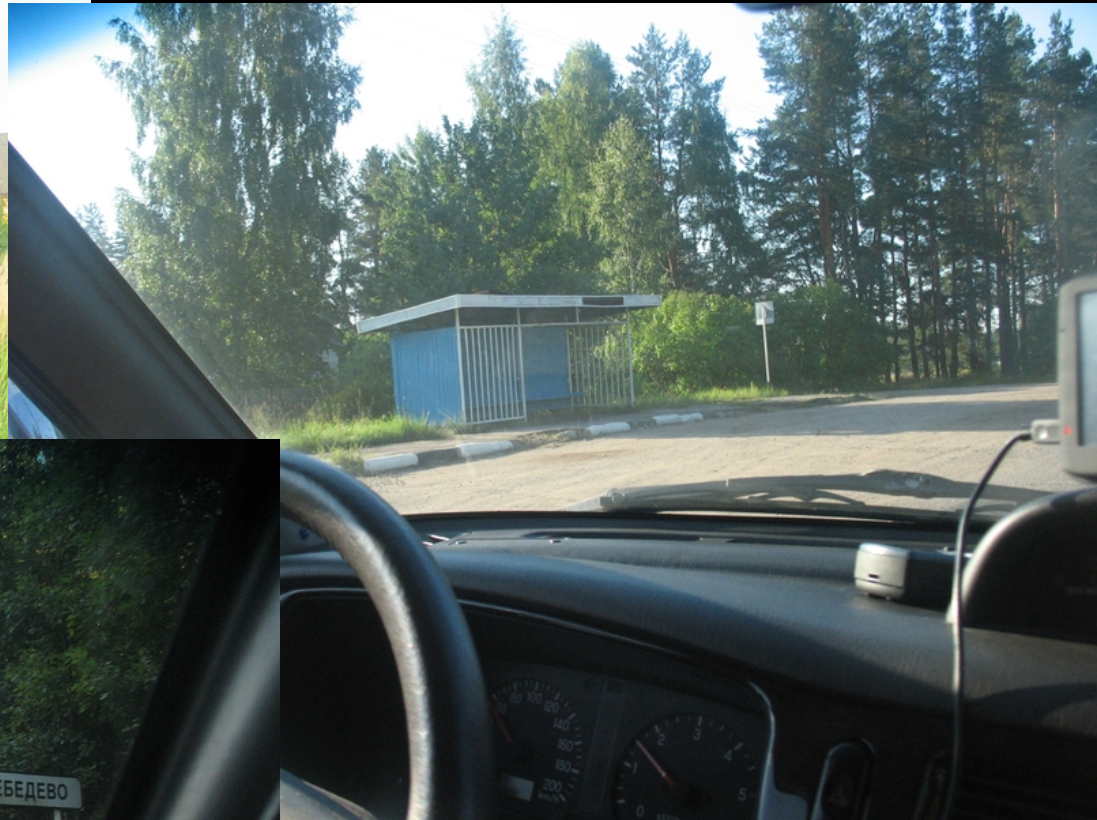


This one

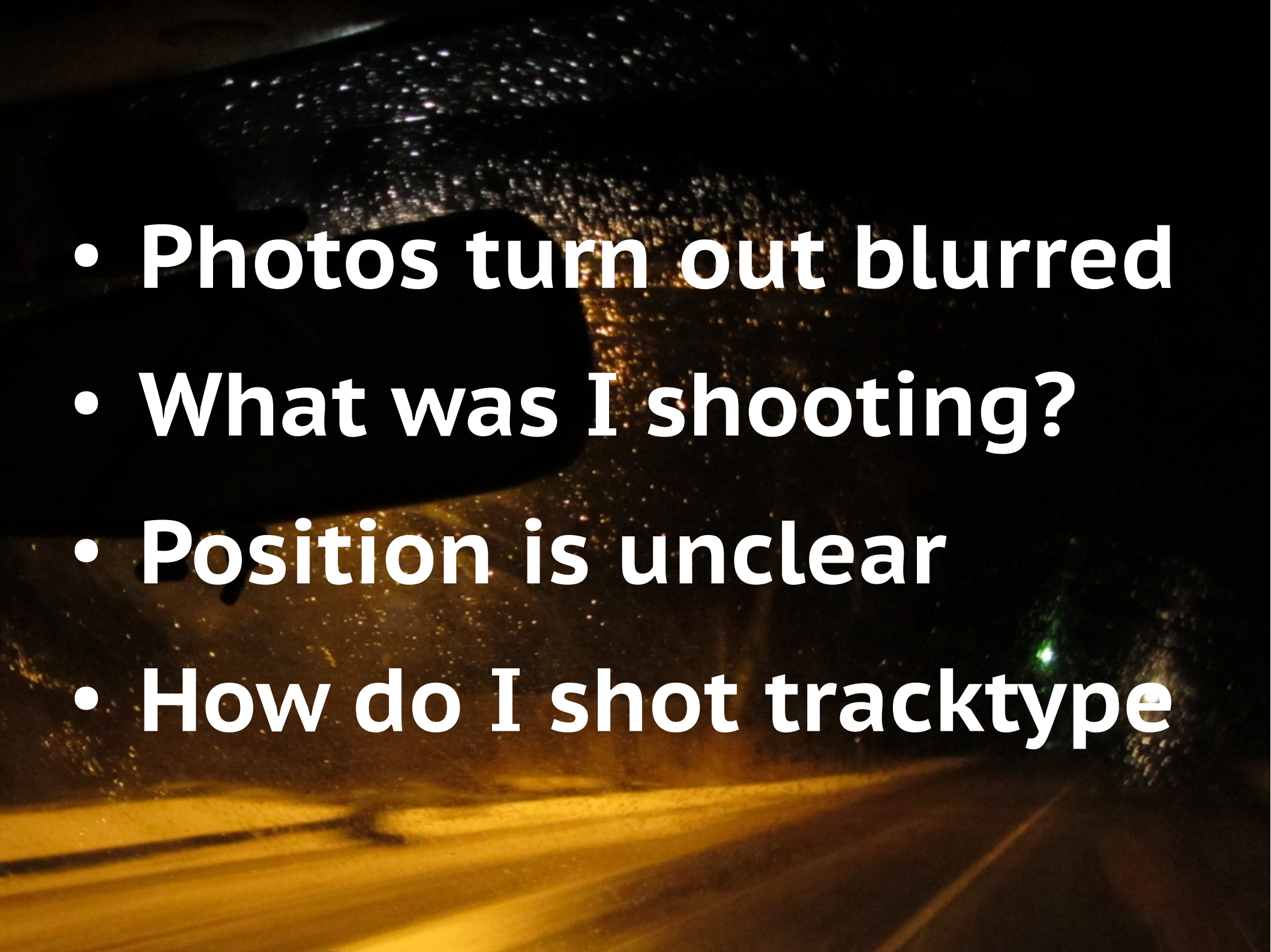




The Past



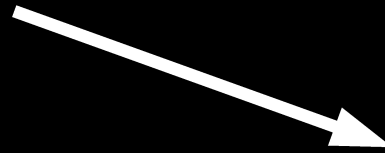


- 
- A blurry night photograph of a road with a starburst light source in the distance. The image is dark with a yellowish glow from the road and a bright, multi-pointed starburst light in the upper right. The text is overlaid in white on a dark, semi-transparent background.
- **Photos turn out blurred**
 - **What was I shooting?**
 - **Position is unclear**
 - **How do I shot tracktype**

NOPE.



This one





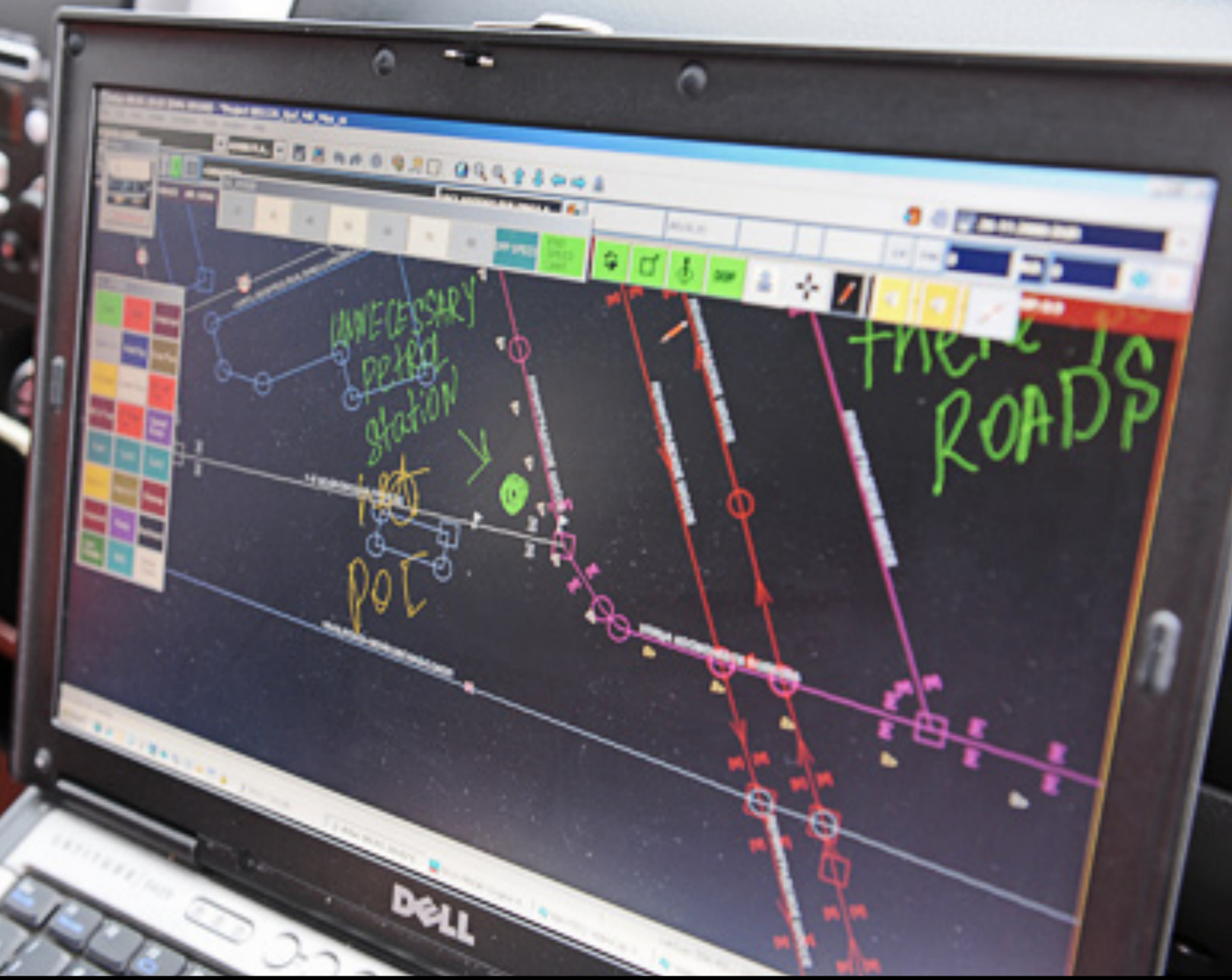
city limit, bus stop on the right HERE crossing bus stop on the left shop on the right HERE, road became grad three no two, city ended and stream immediately after, intersection with traffic lights for some reason, bus stop right crossing HERE road goes right surface compacted two lanes and after that immediately bus stop left, bus stop right crossing bus HERE stop left, city limit shop right convenience store twenty four seven named produkty crossing HERE, intersection zelyonaya ulitsa paved all the way footway separate on the right, bus stop right hmm why there is not one on the left, bus stop left, intersection nizhnaya ulitsa unpaved immediately after speed limit forty, speed limit ends, unpaved track goes to the left and HERE city limit, stream, bus stop right crossing bus stop left HERE, stream, stream, cafe oteshka twenty four seven HERE on the right parking near it, speed limit sixty, speed limit off, bus stop right crossing bus HERE stop left, city limit, restaurant matreshka on the left HERE is crossing bus stop on the right and on the left, city ends, stream, speed limit sixty, stream, speed limit ends, city limit, bus stop on the right HERE crossing bus stop HERE on the left shop on the right HERE, road became grad three no two, city ended and stream immediately after, intersection with traffic lights for some reason, bus stop right crossing HERE road goes right surface compacted two lanes and after that immediately bus stop left, bus stop right crossing bus HERE stop left, city limit shop right convenience store twenty four seven named produkty crossing HERE, intersection zelyonaya ulitsa paved all the way footway separate on the right, bus stop right hmm why there is not one on the left, bus stop left, intersection nizhnaya ulitsa unpaved immediately after speed limit forty, speed limit ends, unpaved track goes to the left and HERE city limit, stream, bus stop right crossing bus stop left HERE, stream, stream, cafe oteshka twenty four seven HERE on the right parking near it, © Raimond Spekking / CC BY-SA-3.0 (via Wikimedia Commons), speed limit sixty, speed limit off, bus stop right crossing bus HERE stop left, city limit, restaurant matreshka on the left HERE is crossing bus stop on the right and on the left, city ends, stream, speed limit sixty, stream, speed limit ends, city limit, bus stop on the right HERE crossing bus stop HERE on the left shop on the right HERE, road became grad three no two, city ended and stream immediately after, intersection with traffic lights for some reason, bus stop right crossing HERE road goes right surface compacted two lanes and after that immediately bus stop left, bus stop right crossing bus HERE stop left, city limit shop right convenience store twenty four seven named produkty crossing HERE, intersection zelyonaya ulitsa paved all the way footway separate on the right, bus stop right hmm why there is not one on the left, bus stop left, intersection nizhnaya ulitsa unpaved immediately after speed limit forty, speed limit ends, unpaved track goes to the left and HERE city limit, stream, bus stop right crossing bus stop left HERE, stream, stream, cafe oteshka twenty four seven HERE on the right parking near it,

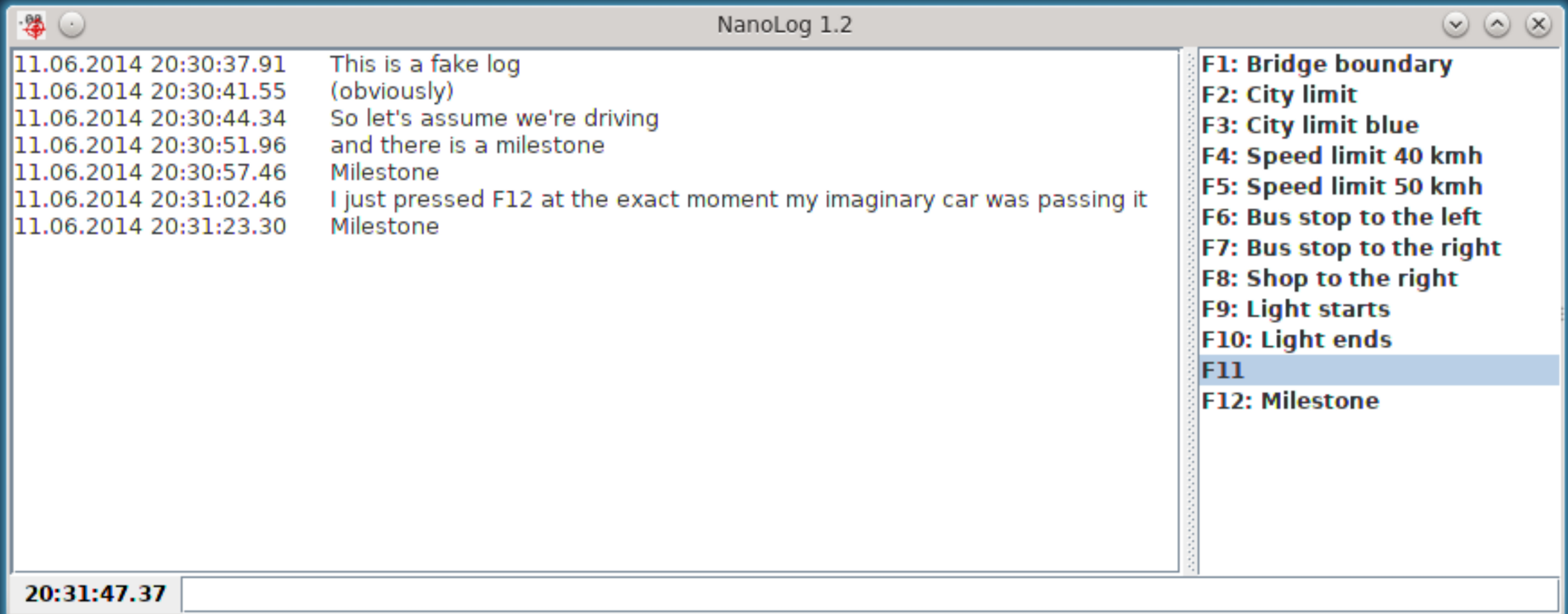
How far is this milestone?



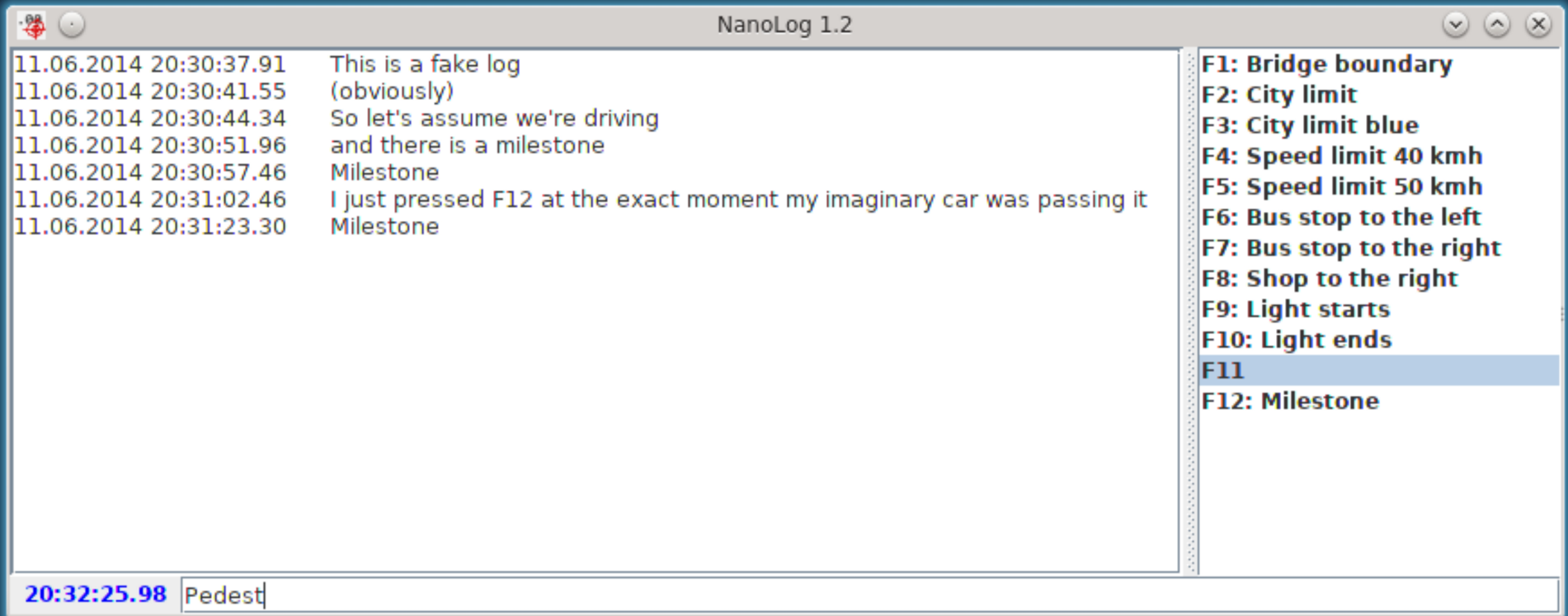
The Present







NanoLog



NanoLog



Слой

- NanoLog
- GPX 20120605.gpx
- Спутниковые снимки Bing

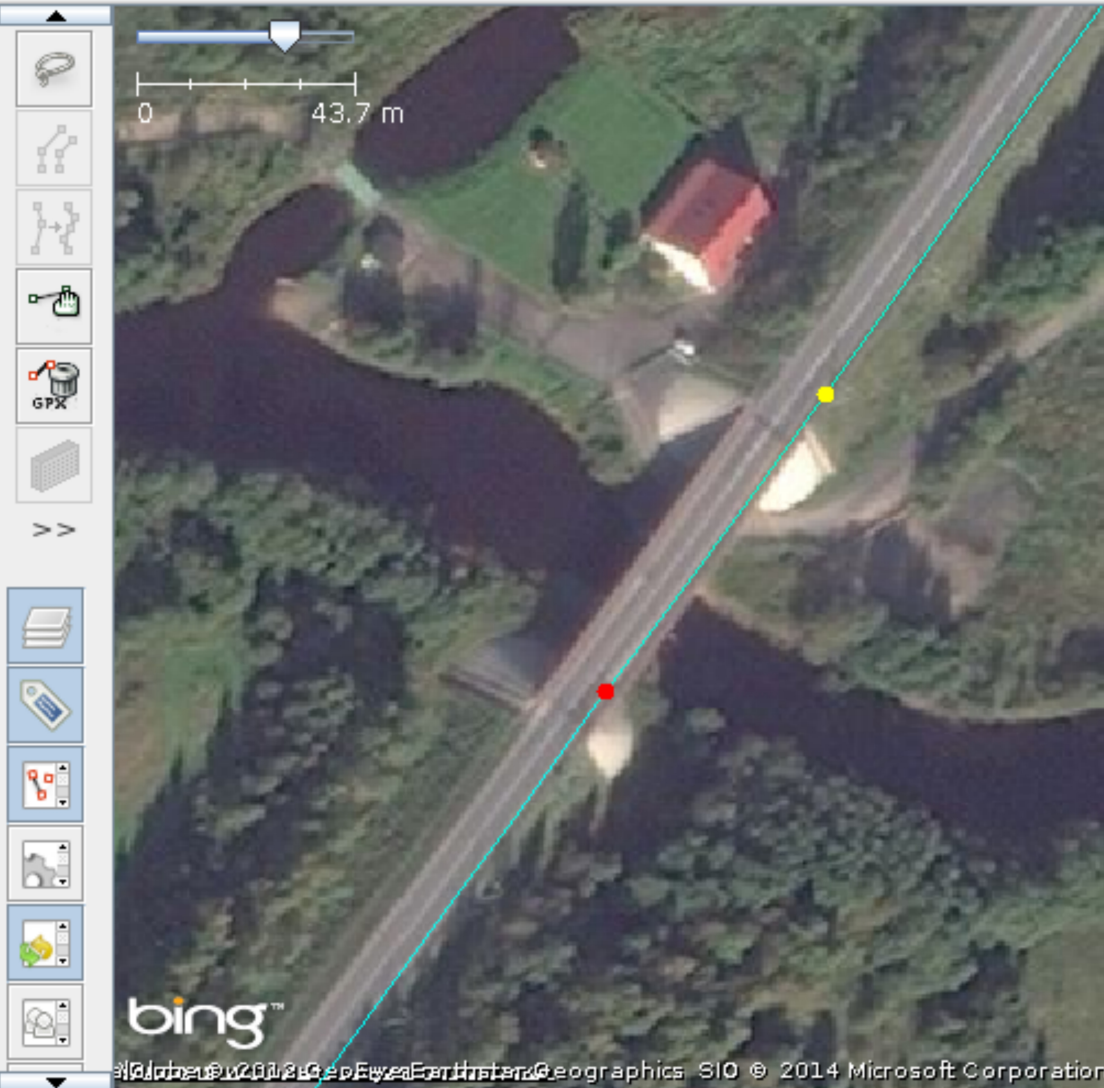
Теги / Участие

Выберите объекты для изменения тегов.

+ Добавить Провка Удалить

Выделение

- Список изменений
- Фильтром скрыто:0, отключено:0
- Relation Toolbox
- GeoChat (регистрация)
- NanoLog
 - 17:21:47 Граница моста
 - 17:21:48 Граница моста
 - 17:21:52 километровый столб
 - 17:22:27 километровый столб
 - 17:22:56 труба
 - 17:23:00 километровый столб



Слой

- NanoLog
- GPX 20120605.gpx
- Спутниковые снимки Bing

↑ ↓ ↶ ↷

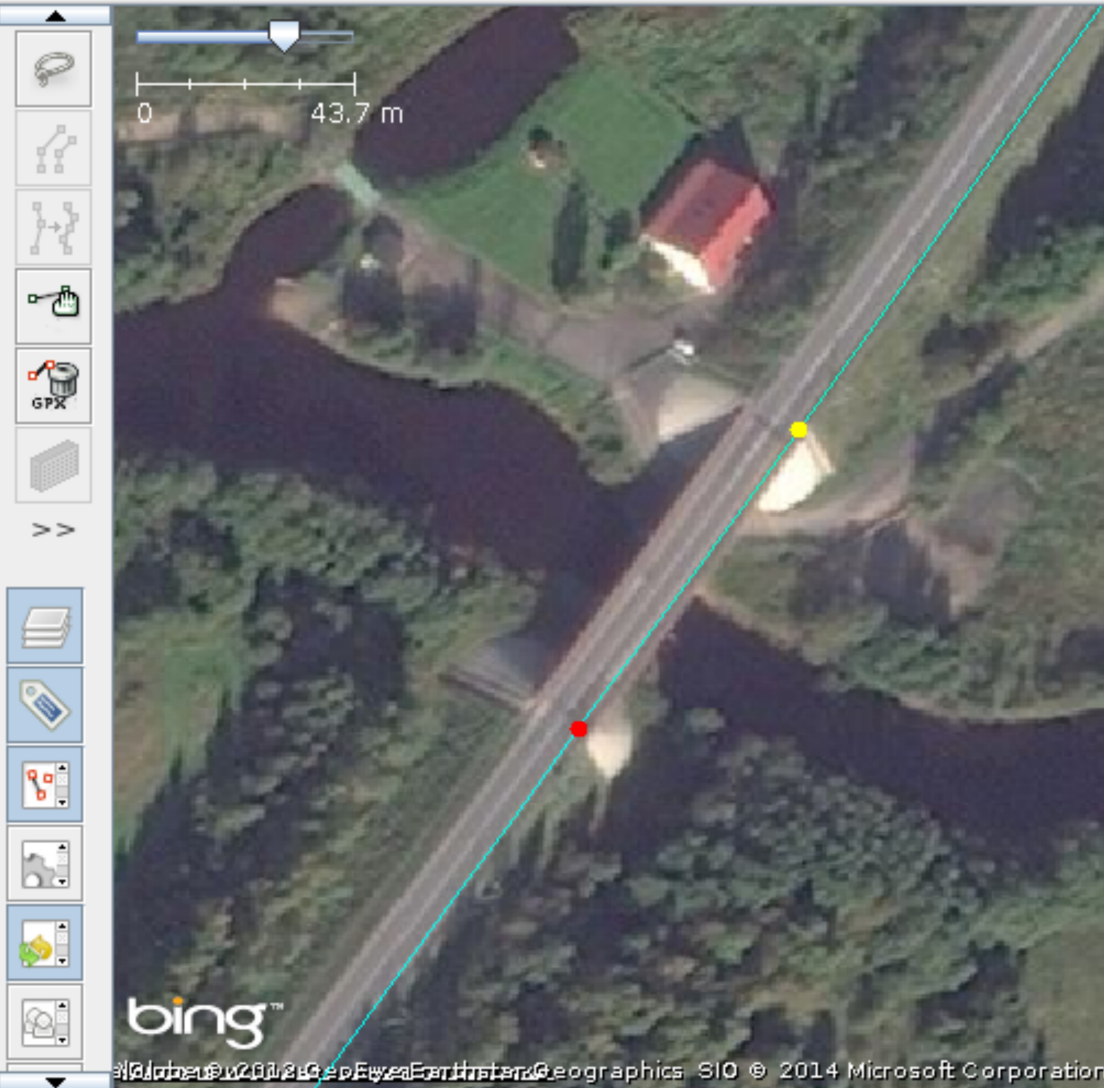
Теги / Участие

Выберите объекты для изменения тегов.

+ Добавить Провка Удалить

Выделение

- Список изменений
- Фильтром скрыто:0, отключено:0
- Relation Toolbox
- GeoChat (регистрация)
- NanoLog
 - 17:13:50 Перекрёсток
 - 17:13:53 Граница моста
 - 17:13:59 Граница моста
 - 17:14:02 Граница моста
 - 17:14:07 первая граница не считается
 - 17:14:14 Перекрёсток



Слои

- NanoLog
- GPX 20120605.gpx
- Спутниковые снимки Bing

↑ ↓ ↶ ↷

Теги / Участие

Выберите объекты для изменения тегов.

+ Добавить Провка Удалить

Выделение

- Список изменений
- Фильтром скрыто:0, отключено:0
- Relation Toolbox
- GeoChat (регистрация)
- NanoLog**
 - 17:13:50 Перекрёсток
 - 17:13:53 Граница моста
 - 17:13:59 Граница моста
 - 17:14:02 Граница моста
 - 17:14:07 первая граница не считается
 - 17:14:14 Перекрёсток

**THREE
THOUSAND
KILOMETERS**

(TTK for short)

True OSMers map alone...

True OSMers map alone...
uphill...

True OSMers map alone...
uphill...
against the wind...

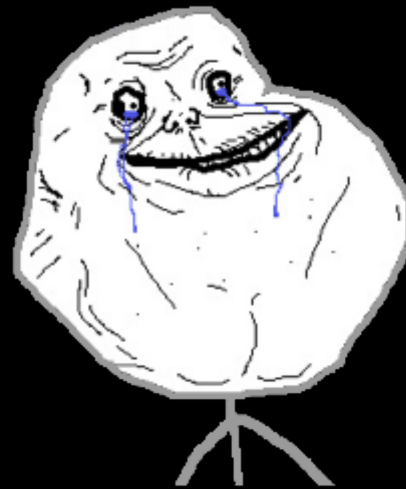
True OSMers map alone...

uphill...

against the wind...

in a snowstorm...

True OSMers map alone...
uphill...
against the wind...
in a snowstorm...





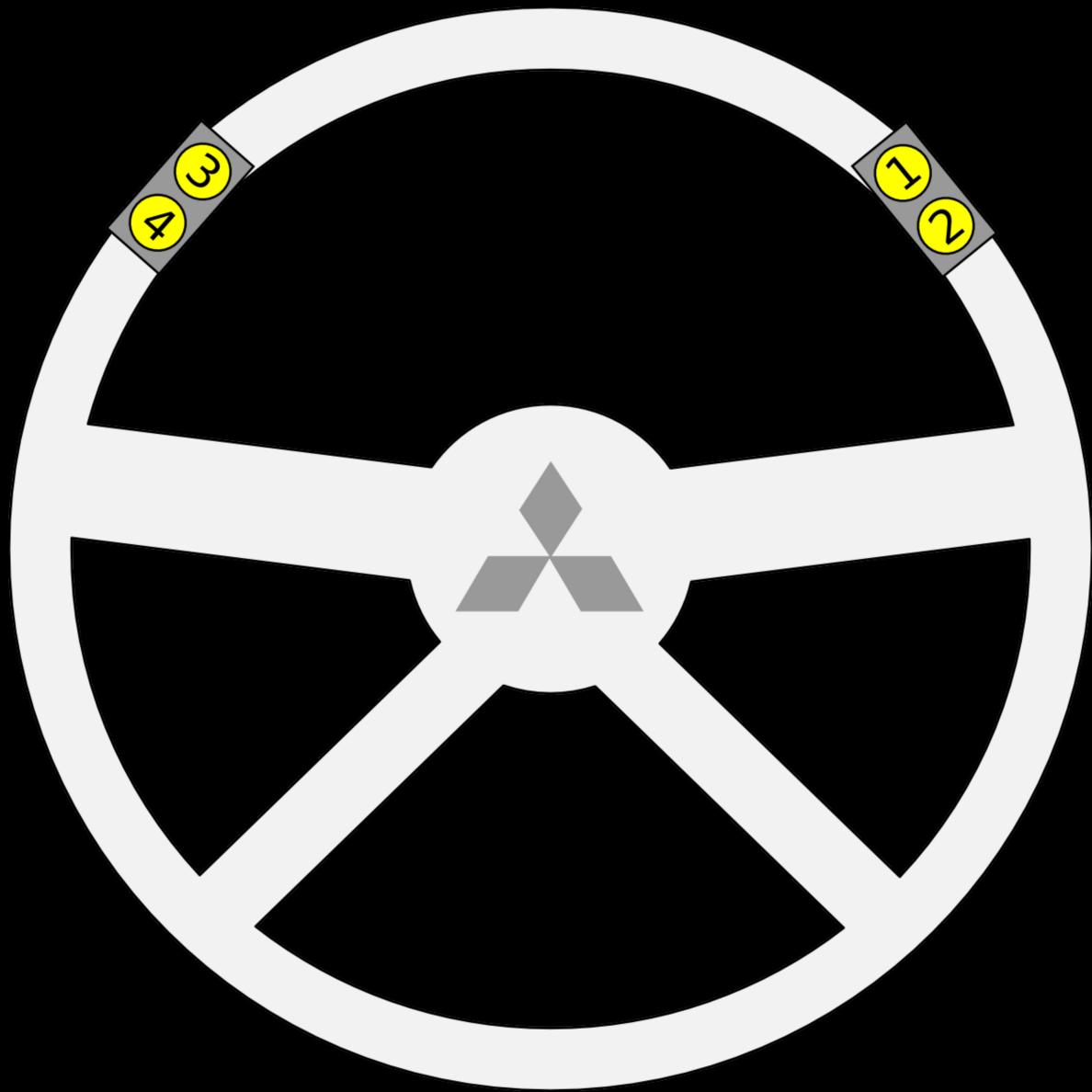


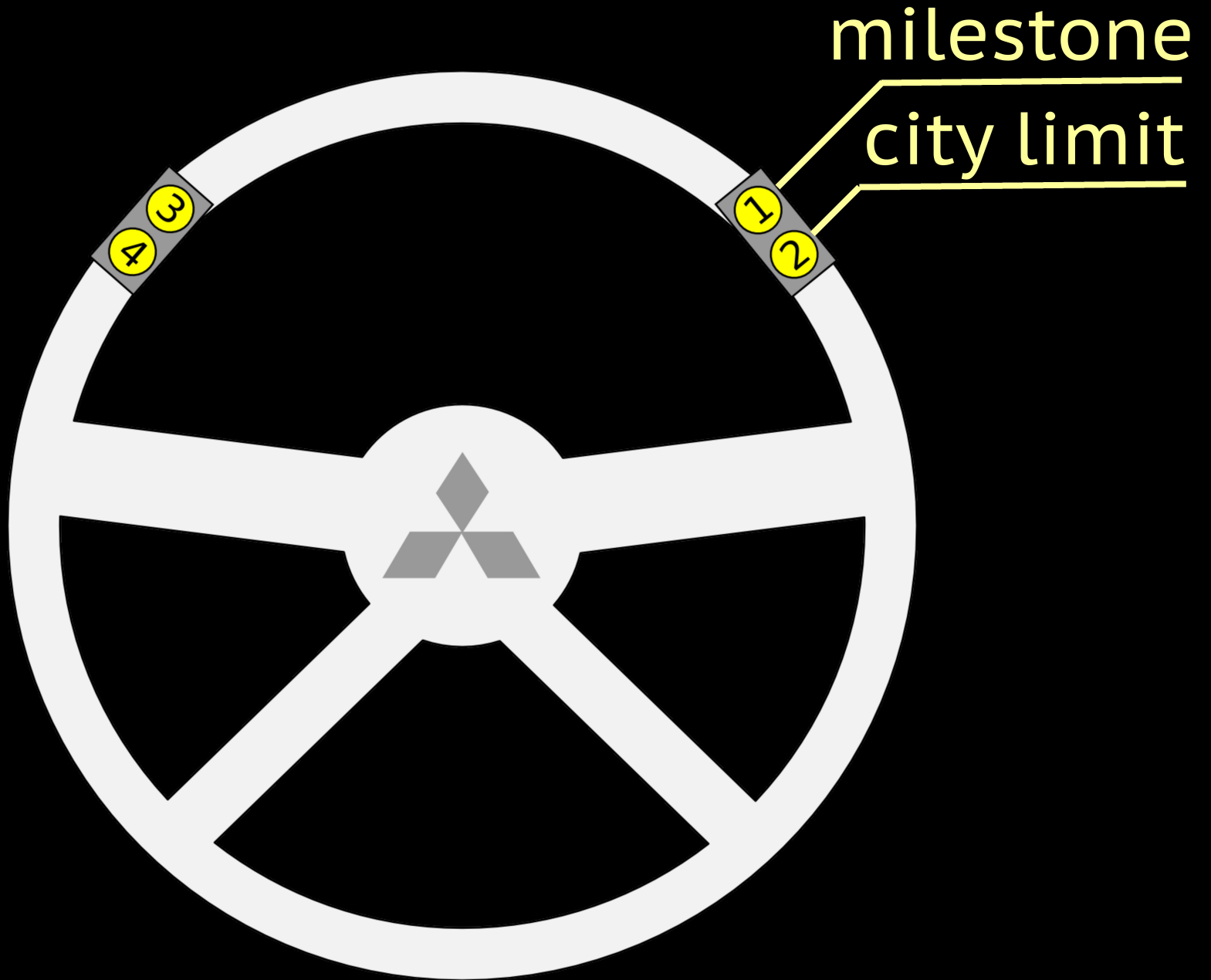
NanoLog for drivers

Like this

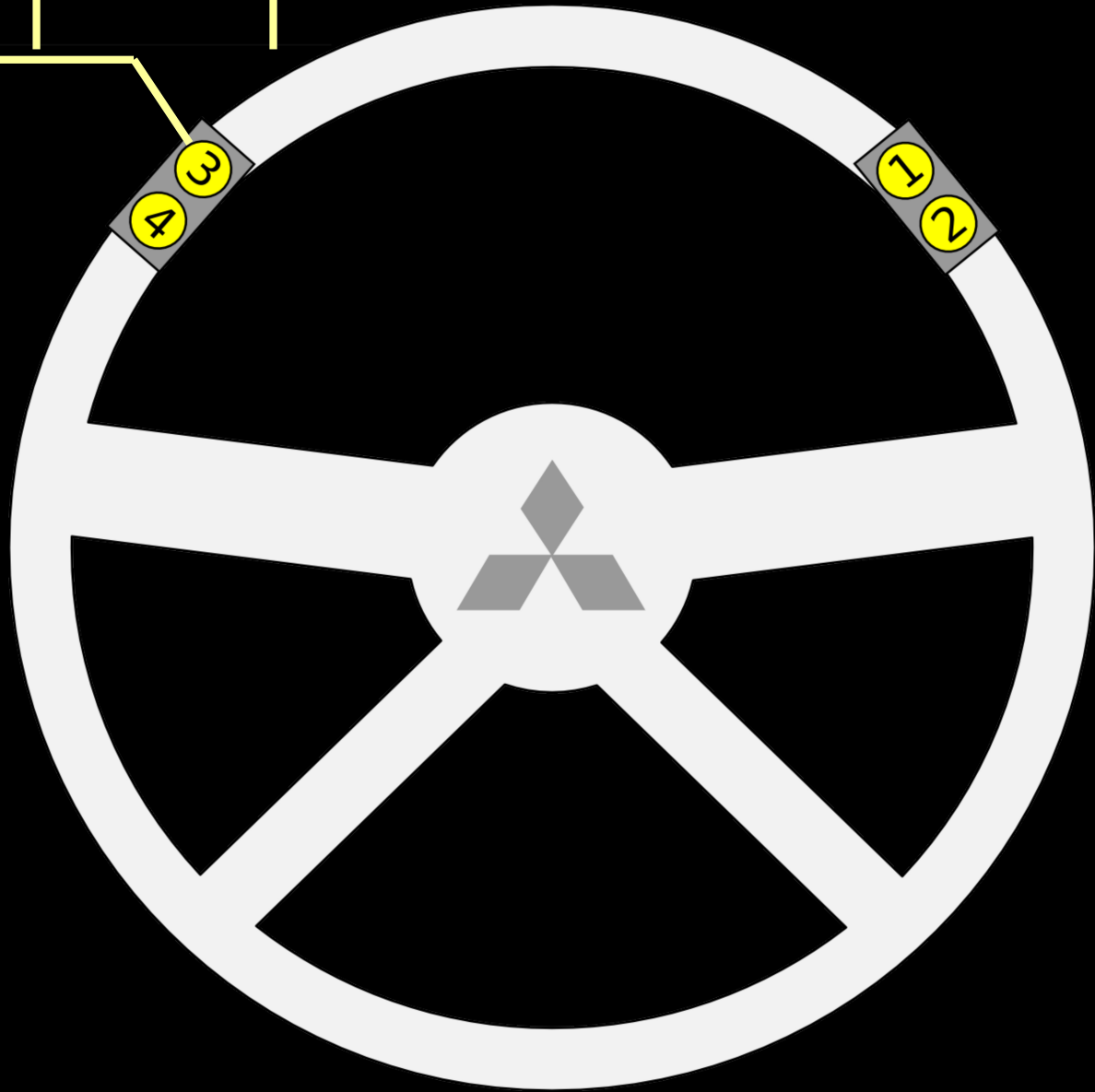
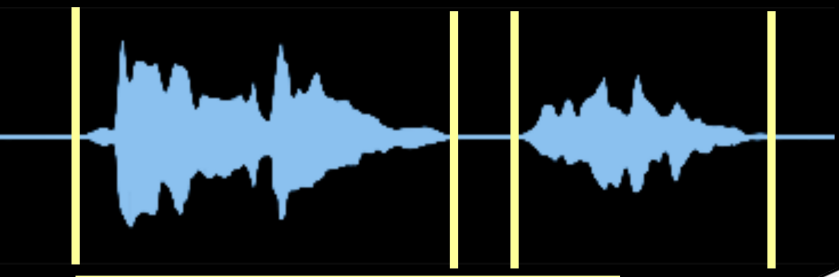


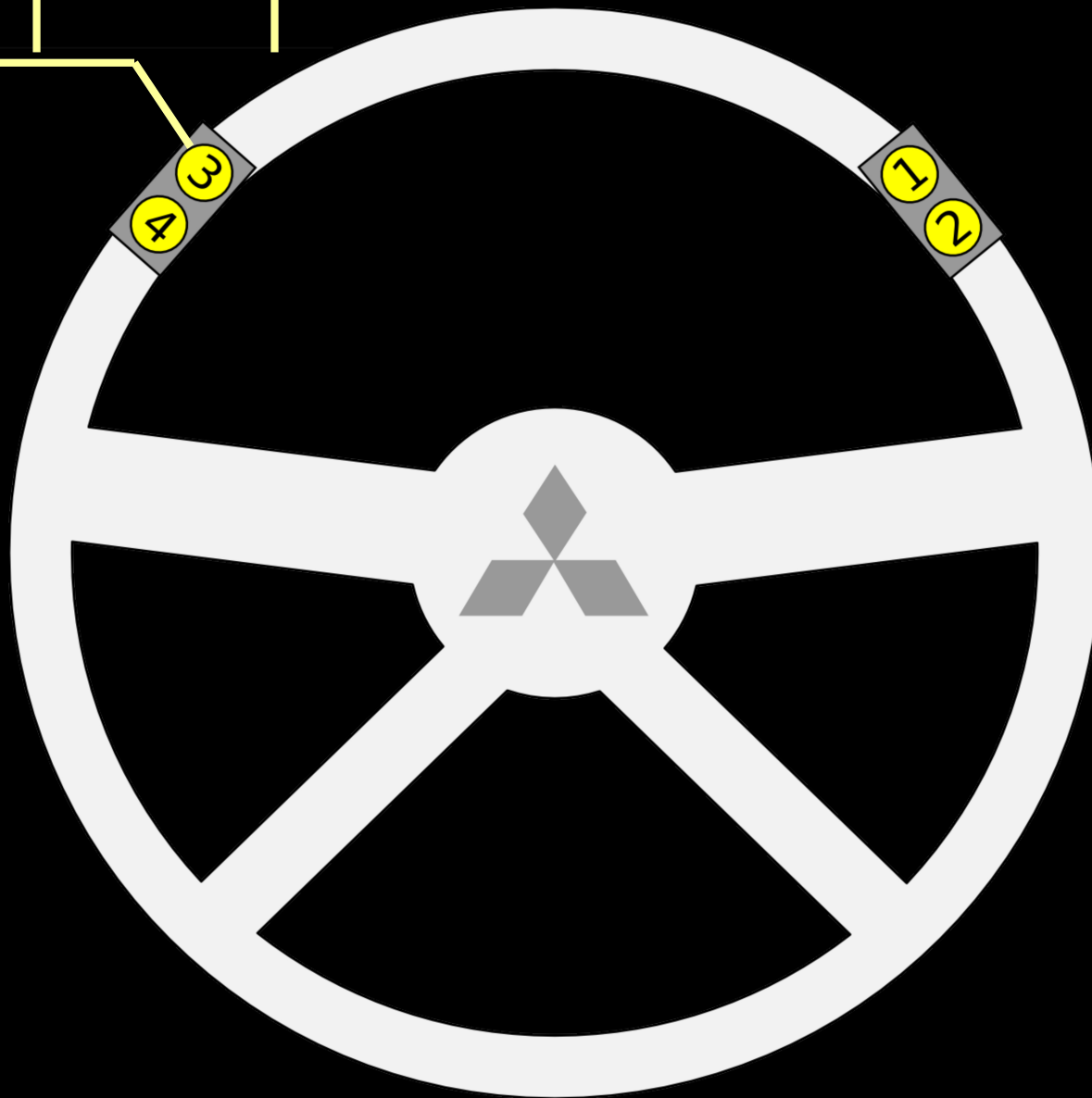
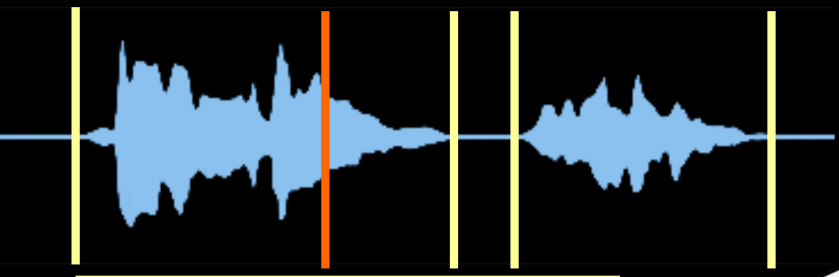
The Future

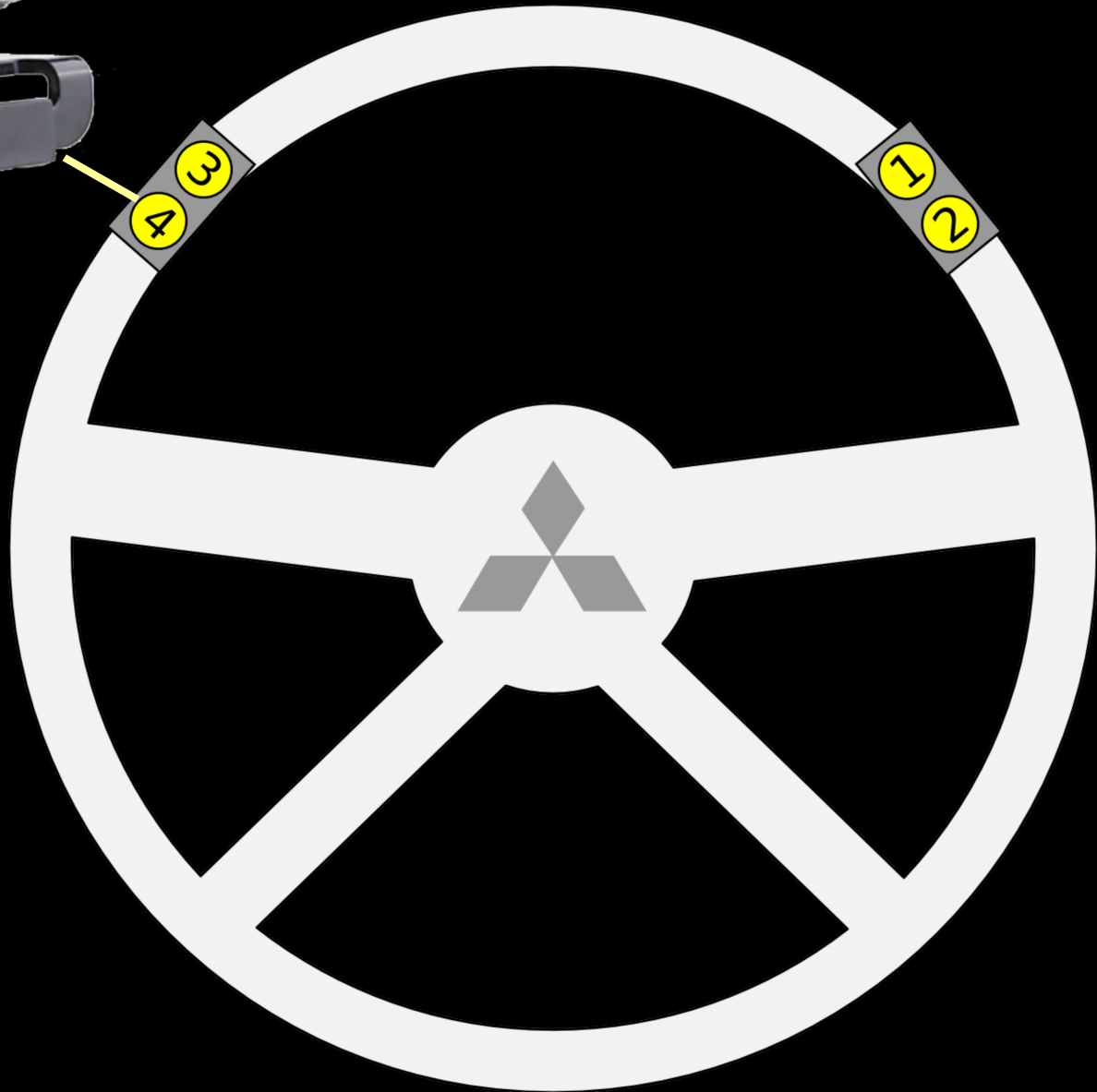




milestone
city limit







Release here —

ХОРОШАЯ

Press here —

Much more

- Attachments
- OSM tags
- Server

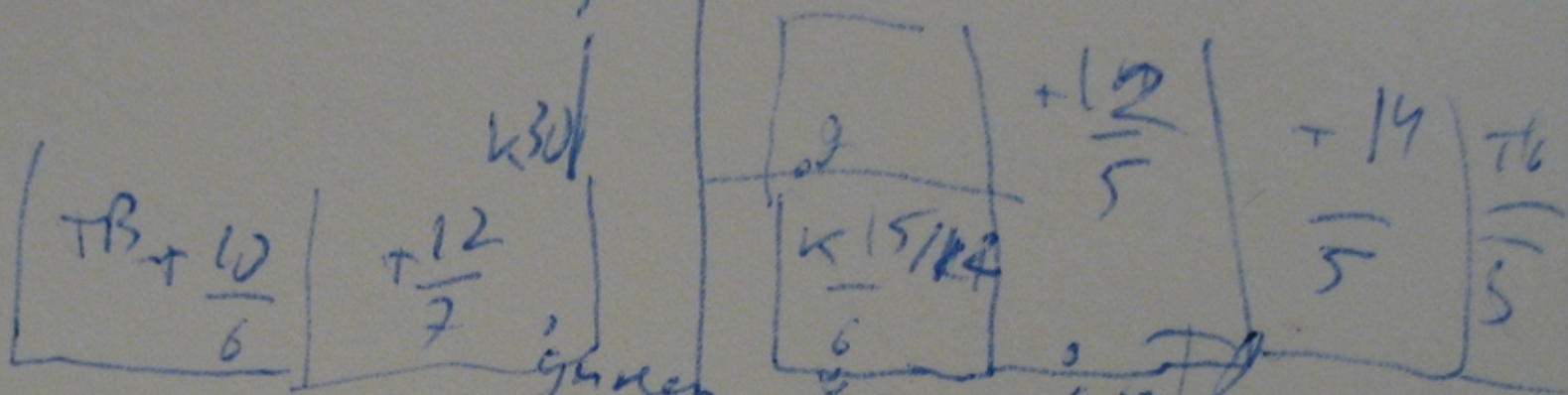
Plain text NanoLog → Surveyor XML

Surveyor XML + fixed coordinates =

Walking

Papers

Kaban.

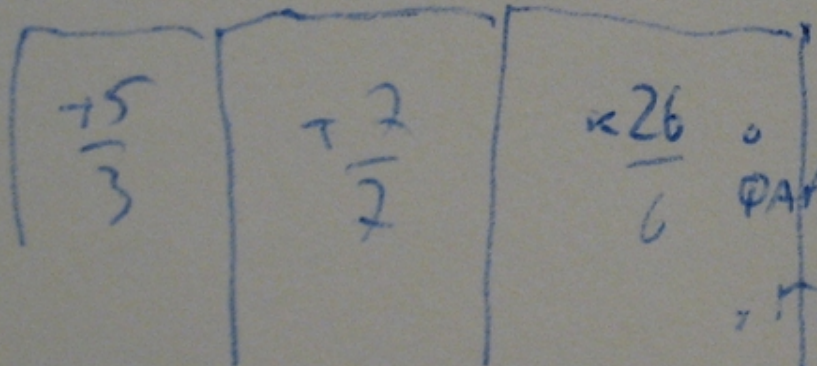


гидран
сиф. 9-23

мангалык

сиф. 10

сиф. 11



ФАРМАКОВ

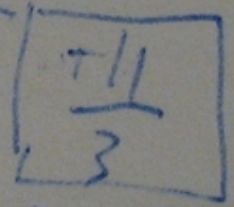
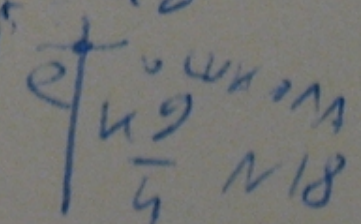
1-5: 9:30-20

МАБ. БИР

There is a sign on the wall

пор. ремонт фарм

1-3: 8-20



pitch bank
составной

CP5

N26

- No printing tiles
- No GPS signal
- No Internet connection
- Accessible hardware



2010 to 2014

Potlatch 1 → iD

YOURS → OSRM

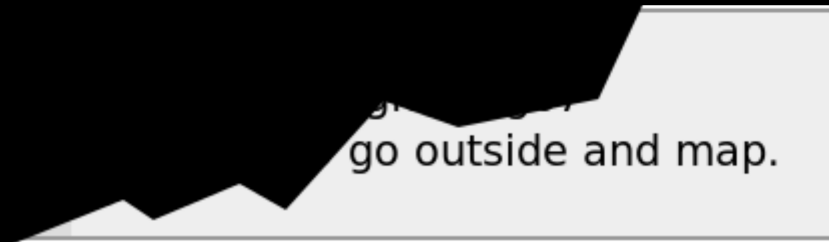
Mapnik XML → CartoCSS and MapCSS

Nominatim → well, better Nominatim

XAPI → Overpass API

Walking Papers → Walking Papers

Thanks!



Ilya Zverev, SotM EU 2014